

1888 Depot in Palms Declared a Monument

PALMS — The Cultural Heritage Board of the Los Angeles Municipal Art Commission has declared a former Southern Pacific Railroad depot in Palms to be a monument of historic and cultural value.

The declaration is backed by a Los Angeles city ordinance forbidding demolition of historical monuments.

The old depot, which was known as "The Palms," was built in 1888 and is located at National Blvd. and Vinton Ave.

The depot was abandoned in 1941. The railroad sold the station and grounds which are now owned by the Sweets Company of America.

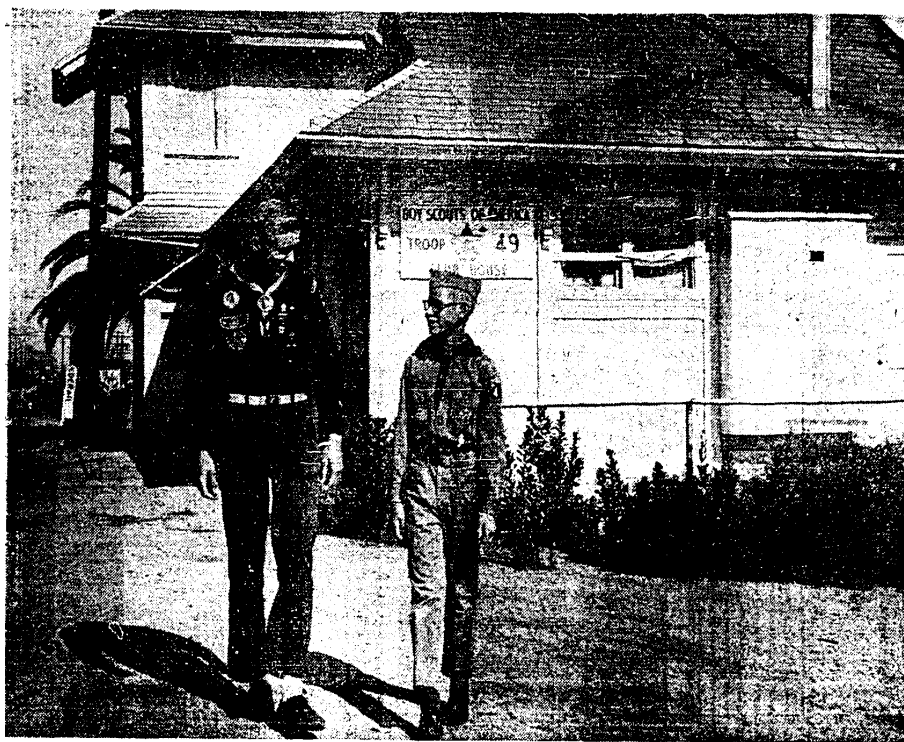
The structure is being used as a meeting place for the Culver-Palms Boy Scout Troop 49.

Scoutmaster Roy Neperud said the troop would continue using the depot during the 1963-64 school year and that the troop plans to beautify the interior and paint the exterior.

The building is of two stories and is made of wood.

The Palms structure brings to 23 the number of monuments that the Cultural Heritage Board has named as historical monuments since last August.

In 1874 Palms established its post office and at that time was considered a pioneer community west of little Los Angeles (pop. 8,000).



MONUMENT—Senior patrol leader Robert Newnam, left, and second class Scout Peter Neperud

walk from clubhouse, old Southern Pacific depot at Palms. Depot has been declared historic monument.
Times photo